



The 35th
Sewickley
HOUSE TOUR

PRESENTED BY
The Child Health Association of Sewickley

FRIDAY, MAY 4, 2012 & SATURDAY, MAY 5, 2012

ALL PROCEEDS BENEFIT CHILDREN OF WESTERN PENNSYLVANIA



**PROUDLY SUPPORTS THE
CHILD HEALTH ASSOCIATION OF SEWICKLEY
2012 HOUSE TOUR**



CHILD HEALTH ASSOCIATION OF SEWICKLEY

A Brief History

In 1923, three women recognized the need to provide fresh milk to undernourished Sewickley school children. How could they know that nearly 90 years later, the charitable society they formed would come to allocate close to \$3.8 million for children's programs and services throughout western Pennsylvania.

With every child who receives the essential care, nourishment and education that she or he needs, we all grow just a little bit stronger. And, as we grow stronger, so does the future of western Pennsylvania. Your support allows the Child Health Association to provide new hope and a stronger future for children, their families and communities.

For more information, please visit us on the web at www.childhealthassociation.org.



ACKNOWLEDGEMENTS

The Child Health Association of Sewickley expresses its appreciation and gratitude to the companies and individuals who so generously contributed to the 2012 House Tour.

Event Sponsors

Dollar Bank
Esmark

Florists & Photography

Bidwell Training Center
Bill Chisnell Productions
cuttings
Karrie Hlista Designs
K.S. Kennedy Distinctive Floral
Reed & Petals Florist
William Penberthy, Penberthy Studios

Community

Costco Wholesale - Robinson Township
Edgeworth Club
Edgeworth Police Department
Kevin Flannery, Sewickley Borough Manager
Giant Eagle - Green Garden
Giant Eagle - Leetsdale
Heritage Valley Sewickley Hospital
Bill and Pat Hittinger
Lenzner Coach Lines
Safran's Supermarket
Sewickley Borough Police Department
Sewickley Valley YMCA
The Presbyterian Church, Sewickley
Trib Total Media



THANK YOU!

The Child Health Association of Sewickley wishes to express its gratitude to the following House Sponsors:





HOUSE TOUR COMMITTEES 2012

Event Co-Chairs

Susanna Greene
Linda Schober
Kelly Wetzel

Bus Hostesses

Emily Shipley

Catalog

Jessie Britton
Nan O'Connor

Crash

Michele Cox
Diana Magera

Event Treasurers

Susan Grieger
Julia Sanders

Flowers

Dawn Nowry

House Captains

Bev Zamer

Luncheons

Pam Vaughan

Photography

Kathe Barge

Post Tour Party

Peggy Bowles
Anne Sutton
Connie Wendzicki

Publicity

Carol Schurman

Refreshments

Linda Taylor

Signage

Janet Renner

Tickets & Posters

Tracey Georgino
Kelly Pfenninger

Transportation

Nancy Davidson
Elisa DiTommaso
Georgi Fishter

Volunteers

Debbie Coonelly
Mary Scalercio



WELCOME TO THE 35TH SEWICKLEY HOUSE TOUR!

The Child Health Association of Sewickley welcomes you to the 35th Sewickley House Tour. We are pleased and honored to present to you six lovely homes that represent the history, creativity and graciousness of our community.

We are extremely grateful to the homeowners who have generously opened their homes. Their kindness has provided the Child Health Association with the ability to raise funds that will allow us to provide grants to children's programs throughout western Pennsylvania. Through the years, our all-volunteer women's organization has granted nearly \$3.8 million to non-profit organizations.

This year we have the additional support of our Event Sponsors, Dollar Bank and Esmark, as well as our House Sponsors, Allegheny Petroleum Products, Clearview Federal Credit Union, Heckman Corporation and NOVA Chemicals. We cannot thank them enough for their charity to the organization and to those it benefits.

This event would not be possible without the cooperation of many individuals, organizations and the community at large. We are extremely grateful for their support.

Have a wonderful time – and come back again for the 36th tour in 2014!

Susanna Greene
Co-Chair

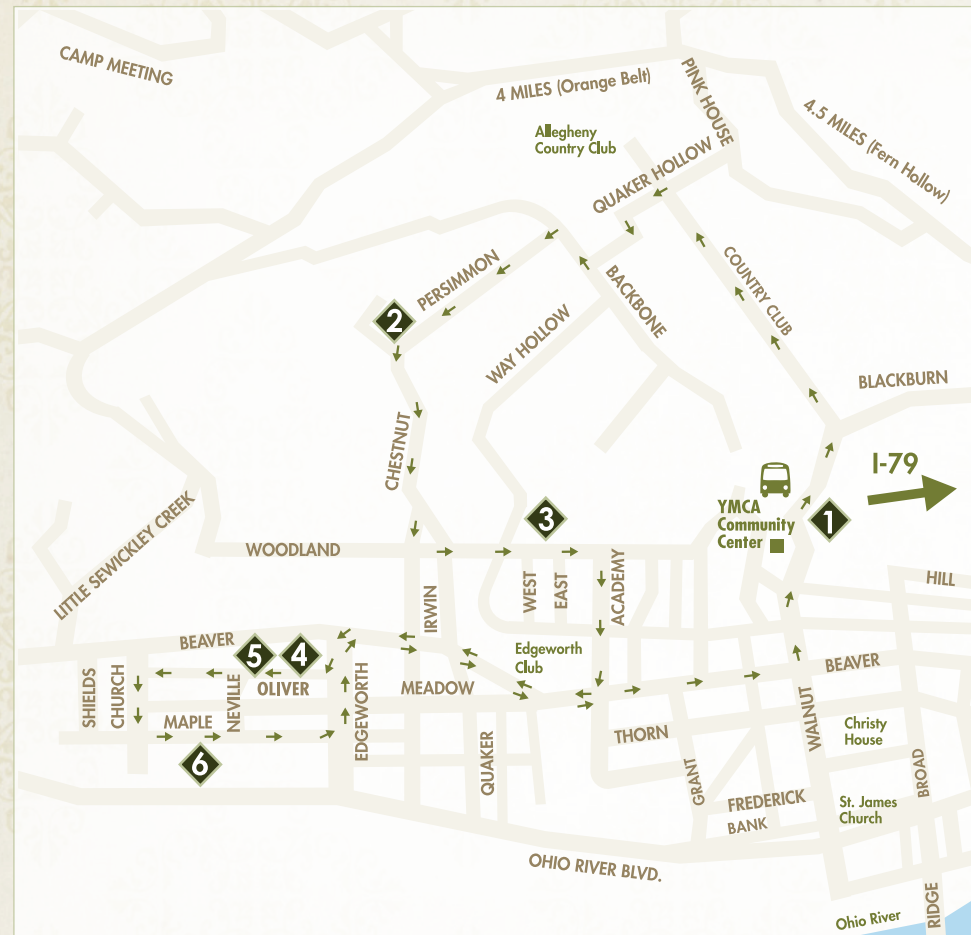
Linda Schober
Co-Chair

Kelly Wetzel
Co-Chair



TABLE OF CONTENTS

MAP	7
HOUSE 1 <i>Quarry House</i> (Access via shuttle bus • Board at YMCA Community Center) 809 Blackburn Road	8
HOUSE 2 <i>Back There</i> (Not on Candlelight Tour) 857 Persimmon Road	11
HOUSE 3 <i>The Murphy House</i> 29 Woodland Road	15
HOUSE 4 <i>House of Four Sisters</i> 408 Oliver Road	18
HOUSE 5 <i>The Cottage on Oliver</i> 422 Oliver Road	21
HOUSE 6 <i>The Light House</i> 451 Maple Lane	24



TOUR MAP

While enjoying your tour,
please remember:

- Wear walking shoes
- Do not smoke in homes or gardens
- Do not request the use of facilities
- Observe indicated boundaries & parking regulations
- Do not use cameras
- Do not bring children under the age of 8

QUARRY HOUSE 809 Blackburn Road

This house, constructed around 1894-1896, was built by the owner of a quarry which provided stone for many of the walls still standing in the Sewickley Valley. A popular tale associated with the house includes the possibility of one of its former owner's current presence – as a ghost!

Entry

The foyer showcases the first of many panels of stained glass with elaborate chasing situated throughout the house. The current owners have changed the previously traditional paint colors to Victorian ones, while updating them with a high gloss finish. The unique chairs are upholstered in alpaca, a harbinger of the many unusual furnishings and collections gathered from around the world. The hanging lantern has been converted from its original gas-burning operation, one of many light fixtures that have been replaced by antiques. Greek key molding and a pair of antique torchiers complete the period touches.

Family Room

Originally serving as a dining room, the family room unites period elements with modern comfort. A leather sectional, ornamented with a feather throw, centers the room. A library table showcases an elaborate carved edge and painted Regency chairs. The large angel is one of many pieces purchased in Dallas, the wife's hometown. Twentieth century elements include a gas-burning fireplace and a coffee table that provides storage for wine.

Flowers By



412.251.5601

www.billchisnellproductions.com



House 1 - Quarry House

Dining Room

The wife's collection of mirrored plateaus reflects the light of an amber glass antique chandelier which the wife's mother found in a warehouse, broken up into its many parts. Upon its reconstruction, the mother and daughter were delighted to discover that not a piece was missing. The built-in breakfront was once the back of a bar. It contains part of the wife's collection of antique powder jars.

Reception Hall/Powder Room

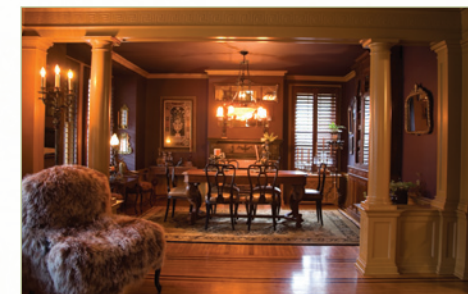
The family opened a wall and installed French doors in the area they once referred to as "The Hallway to Nowhere." The benches were originally part of an old Canonsburg church, while the coat rack and bronze candle sconces came from France. The floor lamp, featuring a heavily embroidered shade festooned with glass beads and metal fringe, was bought in Louisville on one of the couple's annual trips to the Kentucky Derby. The powder room is literally highlighted by an impressive fleur-de-lis patterned window.

Smoking Room

A cowhide leather sofa and dyed rug, hound's-tooth patterned chair, and box-on-stand bar denote this masculine room as the husband's refuge. The bar is topped with the husband's collection of antique corkscrews. The room features an original coat rack and shelf under the casement windows, as well as original cupboards behind the sofa. The humidor is constructed from an antique wood panel.

Hallway/Ladies' Drawing Room/Wife's Office/Bath

The hallway's ornate newel post and finials are enhanced by the richly colored triple-paned stained glass window on the landing. Note the faux bois painting on the doors leading from the hall. The ladies' drawing room features its original oak fireplace and tile, and an antique sofa recovered in orange velvet. The French lamp is a dual-purpose device used long ago to weigh mail in order to calculate postage. The wife's office retains its original Taylor burner, once fueled by natural gas. The striking egломise clock is a purchase from a Child Health Antiques Show. The bathroom features a chest once located in a dentist's office in Bellevue.



House 1 - Quarry House

Dressing Room/Master Bedroom and Bath

The dressing room is dominated by a massive European burled walnut wardrobe. The hanging clothes racks came from a French department store, while the dressing table was purchased in Rhode Island. The imposing king-sized bed was fabricated from an old wrought iron fence, and required four men to carry it up the stairs. The master bath features an antique cast iron tub. The tile floor features an inlaid border which mirrors the inlaid pattern of the wooden flooring.

Third Floor

Originally the servants' domain, this area's wood flooring changes to pine from the oak found downstairs. You may appreciate that the son's bedroom on the left is not featured on the tour, thanks to his large reptile collection. The boys' recreation area sports a large Palladian window, masculine upholstery and a free standing gas stove. The kitchenette was originally the linen storage area.

Kitchen/Sun Room

Remodeled by a previous owner, the kitchen features an area behind the bar that is original to the home. The large tole tray was purchased at a flea market, and the pie safe is an ingenious cover for a radiator. The wife prefers to keep her large collection of quadruplate unpolished for a more natural look. One side of the cabinets in the butler's pantry seems to have been added at a later date, as one side is quarter sawn oak and the other a combination of pine and cherry. The sunroom, surrounded by grape vines, leads to a large patio, a much loved and frequently enjoyed part of the property.



House 1 - Quarry House

BACK THERE 857 Persimmon Road

Flowers By



Built in the 1950's, this home provides great privacy, as well as incredible views extending as far as Wexford. It has had a two-wing addition and significant interior and exterior changes by the present owners. This is the third property that the generous homeowners have provided for the Child Health House Tour.

Entry/Upstairs Hallway

The two-story entry, expanded by removing the second floor master bathroom and dressing room, features a dramatic staircase and several theater and dance posters, setting the tone for a performing arts theme running throughout the house. The antique tall case clock in the hallway was passed down through the husband's family. The charming upstairs bedroom at the top of the stairs serves as a guest room for the couple's grandchildren, with its "tree house" having been adapted by the children as a secret clubhouse. Be sure to note the grandchildren's names painted into the foliage.

Guest Bedrooms/Upstairs Hallway

The next guest room, with matching antique organdy bedspreads, features several posters and lithographs, including one from the Pittsburgh Ballet Theatre. An adjoining balcony provides an incredible view of the surrounding countryside, and leads into the third upstairs bedroom. This guest room and bath display the classic pairing of rose and pale green. Local artist David Michael Ed created the pair of abstract expressionistic works in mixed media. The burled top of the traveling desk in the hall is another piece from the husband's family.



House 2 - Back There

Living Room

The couple brought in an artist from South Carolina to finish the Venetian plaster walls of the living room, a room which again features distinctive artwork. The painting over the reclaimed pine mantel depicts the wife in a college theater production. Flanking the chinoiserie bar are oil paintings of the daughters' wedding dresses, painted by Sewickley artist Melody Lockerman. A silk and wool carpet, reproduction bar, rich silk draperies, and antique clock provide additional accents in the room. Be sure to note the fanciful "Wizard of Oz" red slippers in the breakfront.

Sun Room/Powder Room/Music Room

The sun room was created when previous owners framed in a porch. The dark brown sisal rug, striped upholstery and unusual floral lamp make this room the perfect indoor/outdoor blend. On the right is an oil painting by family friend Bill Cook, who started his painting hobby when in his early 60's. The watercolors portray the couple's daughters and husbands. Memorabilia of past Debutante and Medallion Balls in the corridor also evoke the daughters' pasts. The antique poster is of a 1920's French actress, Mistinguette, who was unceremoniously discarded by the up-and-coming Maurice Chevalier in favor of her much younger neighbor. Mistinguette's nightly verbal attacks on her former paramour as he arrived to visit his new love became a famous local attraction. The walls of the powder room are papered by an unusual process involving tissue paper, adhesive and glazing. In the dark rose music room, antique Italian marionettes take center stage above the baby grand piano, depicting the tale of a heroine who is pursued by a "dirty old man" and the handsome hero.



House 2 - Back There

Master Bedroom/Bath

Wanting this room to be "totally different" from the rest of the house, the wife was inspired by 1940's Hollywood glamour. Accented by splashes of black, the pale wide-striped walls, mirrored night stands, large walk-in closet, and pair of demi-lune chests convey a sophisticated mood. A chinoiserie chest on the right provides a dramatic counterpoint. Enclosed in marble and mirrors, and featuring Herbeau fixtures, the sensational master bath again features artwork by Melody Lockerman, this time a dramatic depiction of a calla lily. Note the striking effect of the sconces mounted directly on the large mirror.

Husband's Office

This snug room includes shovels used by the husband for the groundbreaking ceremonies at PNC Park, as well as stags from the former B.F. Jones estate in Sewickley. Reminders of the family's involvement with the Performing Arts Camp dot the walls, teamed with house sketches by Sewickley artist Susan Gaca.

Den/Powder Room

This area once served as the original galley kitchen of the house. The present owners added the built-in cabinets on the left, providing much needed storage. A large old sailmaker's table, purchased in California and accented by a pair of distinctive chandeliers, separates the walk-through and seating areas. The circular arrangement of the leather furniture and the Ralph Lauren bar invite relaxing conversation. Adding to the casual ambiance are grass cloth wall covering and a jute runner. The brass double candlestick, from the husband's family, once served as a portable light source for navigating the stairs at night. *Persimmon Sunrise*, a painting of the view from the back of the house, was created by Bill Cook. In the small corridor to the powder room is another Melody Lockerman work featuring Mark Twain. The powder room stars a striking wallpaper of stylized zebras. Playing a part above the doorway is a plaque with an amusing theater reference.



House 2 - Back There

Kitchen

Undoubtedly the showstopper of the house, the generously proportioned kitchen flaunts a large collection of MacKenzie-Childs accessories, lighting and furnishings, including pulls that were adapted to fit the custom cabinets. Outsized black and white checks on the wood flooring - created with basketball court paint - reinforce the MacKenzie-Childs connection. A leathered black granite countertop makes for easy living, as does the Turbo-Chef purple oven. This singular appliance can cook a 14 pound turkey in 90 minutes, and a cake in 14! A pot-filler above the stove, pull-out microwave, two dishwashers and three supplementary ovens provide additional convenience. Black and white photos of Hollywood stars carry over the performance association running throughout the home. A cinema-style popcorn popper provides a final theatrical connection, a whimsical yet practical accent to the seating area with its tin-topped coffee table.



THE MURPHY HOUSE 29 Woodland Road

Named after the family dog, this English-style stucco cottage was designed by Charles Barton Keen, and built in 1919-1920. An early addition combined with an extensive renovation undertaken by the current owners in 2009 make the home just right for an active family of six.

Porch/Entry

The combination of ceiling fans, comfortable furniture and beautiful landscaping make the recessed porch an ideal place to relax. The entry features an antique rug, mahogany furniture and a collection of antique paperweights. In addition, the first of many groupings of antique hand-colored botanical engravings imparts an elegant tone. The painting behind the knife box was a going-away gift painted by a friend's mother, and is a depiction of the homeowners' former house.

Living Room

The living room is anchored by an unusual rug, with a chocolate field and silk sage dots. The combination of traditional inherited or antique pieces and modern accents continues throughout the home. A chinoiserie sewing box sets on the yew wood sofa table, and a clock from the husband's grandmother accents a wall. Other family pieces include a needlepoint bell pull, stitched by the wife's mother, and a baby grand piano, which the wife's great-uncle transported across Canada by horse and cart. The display of botanicals on the front wall of the house is centered by a large engraving by Basilius Besler, a German artist spanning the 16th and 17th centuries. Besler's art was the first to portray flowering plants as objects of beauty, and changed the course of natural history botanicals.



Study

The cozy study features a wood-burning fireplace flanked by bookcases. Of special interest is the Eames chair and ottoman, found in a shop in nearby Ambridge, and a reupholstered wing chair, a “curbside” find. Other interesting elements include a large sunburst mirror and the wife’s collection of Limoges boxes. Masculine features include a display of antique miniature soldiers, a mounted tortoise shell, antelope antlers and a pair of stools upholstered in a giraffe pattern.

Daughters’ Rooms/Master Bedroom/Baths

The zebra-patterned carpet on the stairs leads to a daughter’s bedroom and bath, featuring warm pinks and oranges. Of special note is the glass tile bordered floor in the bath. The master bedroom is centered by a large brass bed and an ornate crystal chandelier. Bamboo shades, an antique desk and leather chair, and a bed for Murphy make this room a warm retreat. The large master bath and dressing room lead to another daughter’s room, again featuring a glass tile border on the floor. A black and white chain design rug and a Venetian mirror add an air of sophistication to this daughter’s room.

Sons’ Rooms/Bath

A back hall features black and white family photos, and a pastel of the wife as a young girl. A signed Mario Lemieux hockey jersey is a recent addition, having been won at the fund-raising auction of a Sewickley church. Blue and camel plaid carpeting, regatta pennants and water colors of Opti boats on Lake Chautauqua combine to make this room a boy’s delight. A Jack-and-Jill bath leads to the second son’s room, again featuring sailing memorabilia.



Butler’s Pantry/Powder Room

A large built-in cabinet anchors the butler’s pantry, providing great storage and a bar. Adjacent to it is a dramatic powder room featuring black and white flocked wallpaper, and raspberry and black window treatments and sink skirt.

Dining Room

A burled walnut English Queen Anne dining table and chairs are updated by black pony hair upholstery. A gas-burning fireplace features a charming mantel with a carved flower basket. The built-in to the left of the fireplace displays antique hand-made Christmas ornaments. A breakfront and inlaid sideboard supply ample storage. The painting of The Plaza in New York was done by a friend of the homeowners.

Family Room

A chocolate and raspberry sectional sofa sets beneath draperies featuring an oversized stylized floral design. An antique bench and rug provide convivial touches. French doors on three sides make this a bright and welcoming room.

Kitchen

Dark brown walls are accented by white cabinets with bin pulls in the large kitchen. Oversized lantern pendants over the island, marble countertops and subway backsplash tiles give a nod to the origin of the house. Other features of the room include a large collection of antique conductors and an eclectic collection of artwork featuring cows. A large copper sink, sea grass chairs around the breakfast table, and Roman shades with wood drop trim bring the kitchen into today’s world.



HOUSE OF FOUR SISTERS 408 Oliver Road

Flowers By **REED & PETALS** 724.940.2200
www.reedandpetals.com

Built in 1994, this home is named for the four daughters of the house. It was designed by the wife's brother, an architect, for a lot in a nearby community. When the owners decided to live in Sewickley instead, the house was situated to fit the lot. Furnished in a fresh, transitional style, the house reflects the family's eclectic and artistic taste.

Dining Room

Passing an oil painting by local artist Diane Stetzer on the right, one crosses the piano room into the dining room. The Stickley style table and chairs are illuminated by a transitional chandelier. Roman shades accentuate the clean lines of a home that is furnished with an active family in mind. French doors lead to an expansive bluestone porch with a much used double-sided fireplace. To the left of the porch sets an impressive bench made from a wood slab brought from the family's previous home.

Living Room

Fresh leaf green walls set off comfortable sofas and chairs. The portrait of the four sisters above the fireplace was painted by the Washington, D.C. artist Timothy Chambers, who spent the day with the family in order to capture the girls' personalities. Eclectic details in the room include a hand-blown glass lamp at the end of the room and one of many whimsical metal sculptures from the wife's collection scattered throughout the house. The painting on the wall behind the sofa is another work by Diane Stetzer.



Kitchen/Breakfast Room

Red-orange wallpaper and chartreuse draperies set off the bright white kitchen and breakfast area. The area is further brightened by charming fruit-adorned tiles in the backsplash. The chairs surrounding the round breakfast room table were painted by the wife of the house after she engaged a furniture maker to replicate "out-of reach" chairs she had seen previously. Adding comfort to the room are a wicker loveseat and end table. A built-in bar and wine cooler make clever use of a nook at the far end of the kitchen. Of special note is the ThinkGlass, illuminated with LED lights, which forms the top of the bar.

Den

Knotty pine bookcases make this room warm and inviting. It features transitional draperies and much loved accessories bought on vacations, many of them accompanied by interesting stories. For instance, the large painted mirror made its way from Boston tied on top of a mini-van driven by the wife. The painting over the mantel was done by American artist Italo Botti, a favorite artist of the owners. Around the corner of the den in the hallway is an appealing winter scene painted by one of the daughters.



Baths/Girls' Bedrooms

The wallpaper in the bathroom on the left was purchased to commemorate a family trip to Paris. Peacock pillows were the inspiration for the colors that pop against the raffia wallpaper in one bedroom, while gray blue paint creates a restful atmosphere in another. The third bedroom sports zebra print window panels and matching pendant chandeliers that serve as reading lamps over the beds. The family wanted to convert the office at the end of the hall to a bedroom for the fourth daughter, but she insisted on sharing with her sister. The second bathroom features dramatic transitional wallpaper with turquoise stylized flowers.

Master Bedroom/Bath

The master bedroom is papered with a soothing natural gray metal grass cloth to complement the patterned draperies. The room also features a gas fireplace and small deck. The metallic element is carried into the bath in the small metallic flecks in the granite countertop. The faux bois bathroom floor tile is a unique feature of the room.

Back Stairs/Lower Level

Bold Nina Campbell paper on the walls leads to the multi-purpose lower level. Warm cherry paneling, a wet bar and wine storage provide the perfect ambiance for entertaining. Family mementos line the walls, including framed dollar bills given to the family by the former Secretary of the Treasury, Paul O'Neill, following a tour of the U.S. Mint. The room to the left is dual purpose, serving as both a guest room and client consulting area. The large area to the rear functions as a studio for the wife, a professional photographer.



House 4 - House of Four Sisters

THE COTTAGE ON OLIVER 422 Oliver Road

The core of this classic home was built in 1895-96 by Morrison Foster, the brother of Stephen Collins Foster, the beloved American composer. Originally called "The White Cottage," it was a replica of the family home in Lawrenceville. In later years, it served as the home of the headmistress for the Edgeworth Seminary for Women. Just as the color reference is no longer applicable, neither is the allusion to the original small cottage, as it was expanded several times over the decades by the prestigious architectural firm of Ingham and Boyd.

Living Room

Setting the color scheme for the rest of the home, this elegant living room features graceful window treatments and welcoming fabrics, textures and furnishings. Of special note are the owner's collections of 18th and early 19th century Canton porcelain, Mason Ware, and a blend of American and English antique furniture including a William and Mary chest-on-chest belonging to the owner's family, and a Hepplewhite chest between the windows. A jewelry box to the left of the doorway features nursery rhyme inlays, and a display case to the left showcases the daughter's collection of Limoges boxes. Anchoring the room are portraits of the daughter and son of the house.



House 5 - The Cottage on Oliver

The “No Good Room”

Passing a pair of Irish Chippendale corner chairs in the entryway, one enters the area the family refers to as the “No Good Room,” because it seemingly had no function. However, the room has become central to the family’s entertaining, as it features a corner wood-burning fireplace beneath an oval portrait of Aunt Ashy, and a center table that serves as a dessert buffet for guests exiting the dining room en route to the expansive porch, a much used element of the house. It also serves as the perfect setting for the family’s Christmas tree. Several pieces of Rose Medallion porcelain and a tall case clock from Kentucky, c. 1810-1829, further enhance the room.

Dining Room

The dining room features an antique Queen Anne mahogany table, along with an English chest and sideboard. Of special interest is the Lowestoft porcelain collection as well as the charming child’s antique chair to the right of the doorway. The owner’s grandmother custom designed and stitched the needlepoint seat following her granddaughter’s birth.

Family Room

The current family room served as the dining room in the original cottage, while now green painted strie walls enfold colorful and comfortable seating. An antique dry sink has been repurposed as a console beneath the flat screen television, serving as both display space for family photographs and storage for electronic equipment. A cherry drop leaf table features majolica plates and a pair of Staffordshire dogs. The far wall showcases an antique sampler on the left, and on the right a musical score written by one of the husband’s ancestors on board ship as he emigrated from Germany to the United States.



House 5 - The Cottage on Oliver

Kitchen

A painted chest by Cape Cod artist Peter Hunt provides a cheery welcome to the kitchen. Bright and airy, its fixtures reflect the home’s provenance while providing the practical conveniences necessary to 21st century living. Molly Amsler, a local artist, painted the French-inspired tile backsplashes and fireplace. Continuing the country French ambience is a large collection of Quimper faience pottery, echoing the room’s blue and yellow color scheme.



House 5 - The Cottage on Oliver

THE LIGHT HOUSE 451 Maple Lane

Flowers By **K.S. KENNEDY** 412.322.7673
Distinctive Floral

Built in 1895 by renowned architects Longfellow, Alden and Harlow, this Colonial Revival house was situated to take advantage of natural light at various times of the day, and many features of the house reflect that objective. It has been remodeled and redecorated by the current owners, specifically by the wife who is an interior designer.

Governor's Drive

A large eagle in the center of the drive, which a previous owner had carved from an existing tree, greets visitors on their way to The Light House. A pond with a cascading waterfall contains bright-colored goldfish, some of which have been in the pond for the eight years of its existence. A four car garage features a separate apartment on the second floor. An arbor welcomes visitors to the rear courtyard.

Front Porch/Entry

The front porch was reconstructed in 2011 with maintenance-free Azek tongue and groove flooring. The balusters on the two sets of stairs were custom made to match the existing balusters on the main part of the porch. The columns and classical molding are original to the house. The large entry features original egg and dart molding and an intricate stair rail. Note that each step repeats a pattern of four different balusters, a unique feature of this house. The current owners replaced most of the light fixtures in the home, including the three sconces in the entry. The oil painting to the right depicts a scene in Tuscany, while the original Audubon hand-colored engraving to the left was a gift from the wife's parents. Original pocket doors are operational between the hallway and the adjoining rooms. Interestingly, the doors on the left side of the house are single, rather than the usual double that is on the entry to the family room on the right.



House 6 - The Light House

Living Room

The living room, which was once the front parlor, is centered by an ornate fireplace on which the owners replaced the original white tile surround with black granite. They also replaced the flooring in the center of the inlaid mahogany border with quarter sawn white oak to match the rest of the floor. As was common when the house was built – and Oriental or other woven rugs were de rigueur – the original floor enclosed by the border was constructed of pine. This feature repeats in all of the downstairs rooms. Charcoal drawings of the three sons at age six, sketched by a Baltimore artist, grace the walls.

Dining Room

Once the back parlor, the current dining room consists of the wife's mother's mahogany dining table, Hepplewhite-style chairs and large breakfront. The unusual chandelier replaces one which was originally powered by natural gas, as were all the light fixtures in the house. The marble-topped server with burl walnut panels was an antique shop find that fits its nook perfectly. Powder and mud rooms behind the dining room provide modern convenience.

Hallway/Lobby

The stairway is dominated by a set of three beautiful stained glass windows, situated and designed to enhance the bright afternoon sunlight. The hallway is further enhanced by a large crystal chandelier that was installed by the current owners. Note the transition to pine flooring on the second floor. The family refers to the large landing as "The Lobby" and utilizes it frequently for homework and general computer work.



House 6 - The Light House

Sons' Bedrooms/Baths

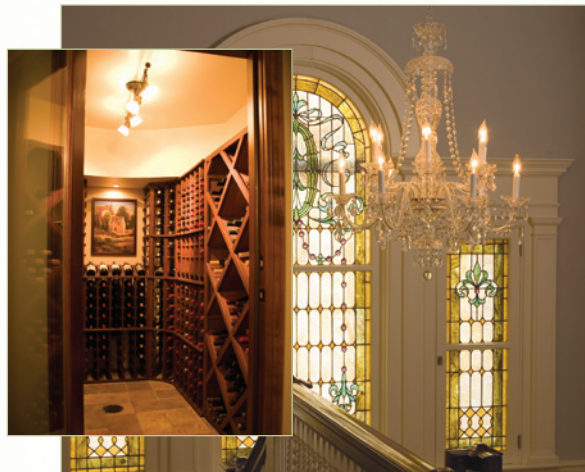
The three sons' rooms and the guest room/office all display original mantels and tile surrounds. The owners installed new eye-ball lighting to highlight these features. Formerly, the fireplaces would have operated with natural gas-powered Taylor burners, a feature common to homes of this age. The baths were also modernized by the current owners. The family decided to leave the original built-in closet in the Jack and Jill bath rather than replace it with a stand-alone shower. A double window to the right was installed by previous owners in place of an original door. It would have once lead onto a flat roof imparting extensive views of the area, including the train tracks that were eventually replaced by Route 65.

Third Floor Suite

Note the framed plaster "box" on the wall of the third floor staircase. This space originally contained a window to illuminate the closet behind it, again to take advantage of natural light. The spacious master bath provides modern conveniences, including a heated towel rack and washer/dryer, while maintaining the spirit of the house. A dormer on the left again features an original window allowing for natural light. The window straight ahead of the doorway provides a view of the Ohio River.

Lower Level

Featuring 22-inch thick walls, the large basement was finished in 2011 to allow a variety of functions. A new wine cellar replaces a bathroom that contained a large bathtub, thought to have been used by servants for washing laundry. A new bathroom, a game room with television, extensive storage on either side of the back hallway, and a sound-proof music room/home theater complete the suite.



Kitchen/Family Room

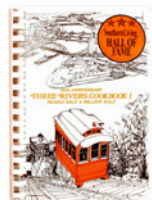
The current owners remodeled the kitchen to include cherry cabinets and built-ins and a granite countertop. A six-burner stove and two sinks provide ease in prepping, cooking and clean-up. A wall was removed to make the family room continuous with the kitchen, but the ornate mantel and crown molding are original to what was once the home's dining room. The cast iron finials on the mantel were discovered on the property by recent landscapers. They were part of the railing of a stairway leading from the home to the old railway lines.





THREE RIVERS COOKBOOK SERIES

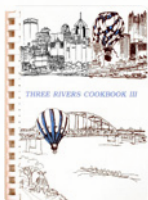
The cookbooks may be purchased at the YMCA Community Center during the House Tour.



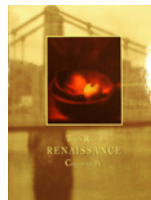
Volume 1
\$15.00



Volume 2
\$15.00



Volume 3
\$15.00



Volume 4
\$20.00

For over 35 years, Child Health has raised money through the sales of the award-winning and nationally renowned Three Rivers Cookbook series. Our highly acclaimed books have been honored with several awards including the *Southern Living Community Cookbook Hall of Fame* and the *Walter S. McIlhenny Hall of Fame Tabasco Award*.

All proceeds benefit children of western Pennsylvania.
For more information, please visit us on the web at www.childhealthassociation.org.



EDGEWORTH CLUB

The Club will be open to the public for both lunch and dinner on Friday and Saturday.

Lunch

Served from 11:00 AM to 3:00 PM

Dinner

Served from 5:00 PM to 10:00 PM

In addition to several menu selections for the lunches and dinners, the Club's weekly Friday night pasta dinner will be offered. Cash and checks will be accepted for payment.

You may call 412.741.8500 to make a reservation. Reservations are preferred but not required.

Bus Tour – May 4th

Bus tour guests will be served a lunch using recipes from the *Three Rivers Cookbook Series: Renaissance Cookbook IV*.

Fresh Mushroom Soup - Page 35

Perfect Rice - Page 176

Poulet Parisienne - Page 99

Roasted Lemon Broccoli - Page 163

Recipe from Edgeworth Mayor Wayne Murphy

Judy's Carrot Cake - Page 229



JENNIFER GEORGE

A Unique and Different Designer

During the Sewickley House Tour, Jennifer George will be displaying and selling her unique jewelry at the YMCA Community Center.

Jennifer is a talented New York City designer whose jewelry has appeared in *The New York Times*, *New York Magazine* and *O Magazine*. Her one-of-a kind pieces - necklaces, lavalieres, bracelets, belts – have a distinctive vintage look. She scours flea markets and tag sales collecting items such as vintage jewelry, findings and beads, all of which are used to create her unique jewelry.

In addition to her ready-to-wear pieces, Jennifer does private commission work combining her customers' own memorabilia with her antique bits to create unique personal necklaces and bracelets for her customers.



A portion of the proceeds will be donated to the Child Health Association of Sewickley.

For more information, please visit
www.jennifergeorgenyc.com.



SEWICKLEY VILLAGE RESTAURANTS

B Gourmet

428 Beaver Street ♦ 412.337.9735

Bruegger's Bagels

422 Beaver Street ♦ 412.741.3069

Café des Amis

443 Division Street ♦ 412.741.2388

China Palace

409 Broad Street ♦ 412.749.7423

East Coast Sandwiches

400 Beaver Street ♦ 412.741.7056

Half Nych Hot Dogs

444 Walnut Street

Marino's Italian Kitchen

616 Beaver Street ♦ 412.741.7868

Naked Grape Wine Bar

515 Broad Street ♦ 412.741.6420

Roma Restaurant

426 Beaver Street ♦ 412.741.1744

Sewickley Café

409 Beaver Street ♦ 412.749.0300

Sewickley Hotel

509 Beaver Street ♦ 412.741.9457

Sharp Edge Bistro

510 Beaver Street ♦ 412.749.0305

Sweetwater Grille

424 Walnut Street ♦ 412.741.4944

Ultimate Pastry Shop

445 Beaver Street ♦ 412.741.9150

Vivo Kitchen

432 Beaver Street ♦ 412.259.8946

Vocelli Pizza

422 Walnut Street ♦ 412.741.8700



CHILD HEALTH ASSOCIATION OF SEWICKLEY

2011 Grant Recipients

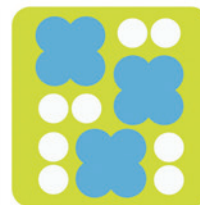
Big Brothers Big Sisters of Beaver County
 Big Brothers Big Sisters of Greater Pittsburgh
 Children's Hospital of Pittsburgh Foundation
 Coraopolis Youth Network/Cornell School District
 Glade Run Foundation
 Laughlin Children's Center

Children's Museum of Pittsburgh
 Pittsburgh Public Schools
 Sewickley Area Libraries
 Three Rivers Adoption Council
 Wesley Spectrum Services
 Sweetwater Center for the Arts



annie gensheimer
PHOTOGRAPHY

412.741.3558 | www.anniegensheimer.com



Thanking Child Health Association of Sewickley for all you have done for children in Western PA



Stop at
Robinson's Home and Garden

For an exceptional selection of high quality
annuals, perennials, shrubs, herbs and vegetables.



Visit
The Basket Loft

For containers, gifts, seasonal décor,
home décor, candles, and more.

527 Blackburn Avenue • Sewickley, PA • 412.741.8740

**FRIDAY AND GENTER
INTERIOR DESIGN**

SUZANNE FRIDAY • ANNE GENTER



412.741.1930
WWW.FRIDAYINTERIORDESIGN.COM



500 S. Main Street
Zelienople, PA 16063
724-452-9200
www.penberthystudio.com

Child Health House Tour Photographer Since 1991



A Family Portrait Tradition

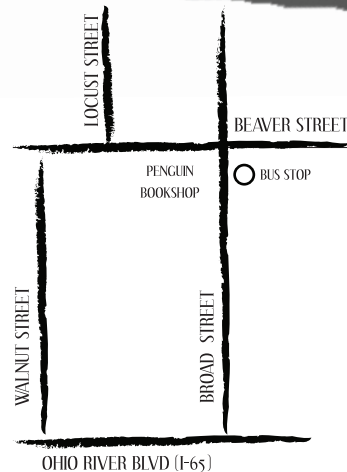
Penguin Bookshop

It's Your World, Open it with a Book!

15% OFF
YOUR
ENTIRE
PURCHASE

through August 1st 2012

Penguin Bookshop
is an independent local
bookstore operating in
the heart of Sewickley
for over 80 years.



PenguinBookshop.com | 412.741.3838

Hours: Monday - Friday 9-8 | Saturday 9-6
420 Beaver Street Sewickley 15143

Shea + Simone

A R C H I T E C T S



sheasimonearch@yahoo.com



412-784-8208

TOURNESOL

Celebrating the World



Fine Table Linens, Luxury Bedding, Gifts for the Home

425 WALNUT STREET • SEWICKLEY, PA 15143 • 412.741.7600

SHOP ONLINE! WWW.TOURNESOLGIFTS.COM

We are proud to support the Sewickley House Tour



Stop by our Sewickley branch today!

510 Beaver Street

(412) 749-5435 • clearviewfcu.org

Federally Insured by NCUA. Equal Housing Lender.

NAN O'CONNOR
RESIDENTIAL DESIGN



609 POIA PLACE
SEWICKLEY, PENNSYLVANIA
15143

TEL. 412-780-0089
NOCDESIGN@HOTMAIL.COM



Thank You!

We hope you enjoyed your day in Sewickley
and look forward to seeing you at the
36th Sewickley House Tour in 2014.



TOUR NOTES

Thank you and come again!



Proudly serving
Pittsburgh's
communities
since 1855.

Dollar Bank®

Since 1855

Mutually Inspired